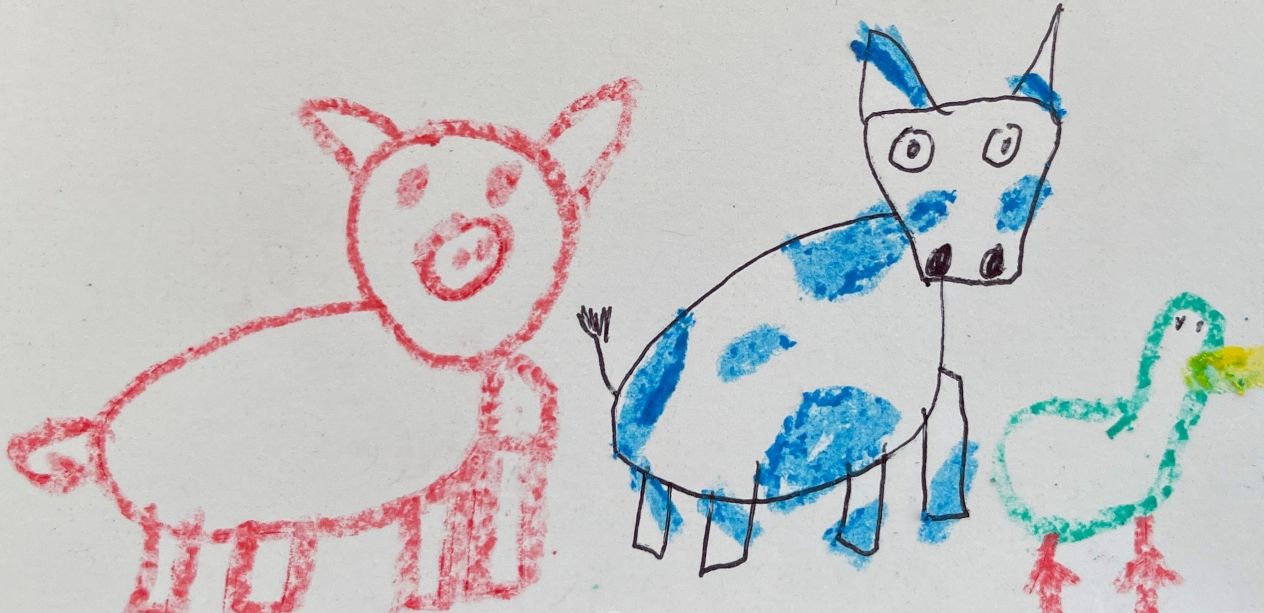


# Montmorency County 2022-2023 Annual Report

Unknown Artist: Montmorency County Fair Coloring Contest 2023



PROGRAMS  
ACCESSED BY  
RESIDENTS

71

SOCIAL MEDIA  
REACH

19,377

ONLINE  
REACH

1755

PROGRAMMING  
REACH

650



I'm delighted to share the results of another successful year of partnership between Montmorency County and Michigan State University (MSU) Extension. Because of your continued support, we've been able to make a difference in the lives of youth, families, businesses, and communities.

MSU Extension offers a broad range of research-based educational outreach to county residents. Over this past year, we've empowered families and individuals to live healthier lives, supported new and local businesses, created opportunities for youth leadership development and career exploration, helped farmers with business management and mental health, and much more. We continue to provide outreach online, hybrid, as well as in-person formats. These options have increased accessibility to Michigan State University resources for your residents. Our staff live and work alongside county residents and are rooted in community relationships and responsive to community needs.

Our partnership with you makes this all possible. On behalf of the MSU Extension team serving Montmorency County, thank you for another great year. We look forward to your continued support and hope you will be able to join us during one of our upcoming programs.

- Adam Koivisto, District 14 Director



2023

4-H



Kindergarten youth at Hillman Elementary School participated in STEAM Activities once a month for the last year. STEAM stands for Science, Technology, Engineering, Arts and Math. The students learned how polar bears stay warm, made bird feeders and catapults. The students also got the chance to make homemade ice cream and egg carton gardens. We finish each event with story time and answer any questions they may have about the program we did that day.



3rd graders have been busy this spring!  
They learned about the chicken life cycle and watch these chicks hatch!



Students had 27 fertile eggs and 24 successfully hatched!

This is a great experience for our students.  
Thank you Bonnie Hardies and MSU Extension for bringing this great opportunity to our students!



MICHIGAN STATE UNIVERSITY

Extension



# 4-H



4-H Summer Camp was a blast. The youth were able to learn about Michigan's woods, waters and wildlife. 15 youth from Montmorency County participated in this amazing event.

**MICHIGAN STATE UNIVERSITY** | Extension





# 4-H Grows Here

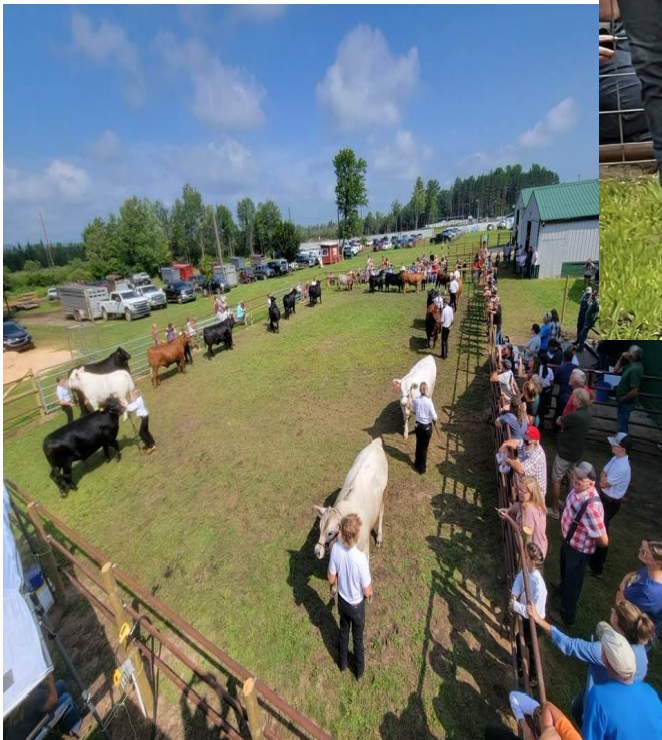
This year 60+ youth participated at the Montmorency County 4-H Fair. These youth brought almost 100 animals to the fair and did amazing job showing and marketing some of the animals. Youth participated in some still exhibits as well.



New to the fair this year was the Montmorency County Goose Chase. Youth spent 6 days participating in a scavenger hunt on the fair grounds.



Youth had to work in groups of 4. This helped with team building and the youth also learned more about 4-H and their projects.



# 4-H



# FOOD SAFETY

Food preservation doesn't only happen in the Fall of the year. Recently a group of hunters gathered to learn how to preserve meat. During the weekend event 20 hunters worked, and practiced safe methods of preserving meats, pickled carrots and pickled brussel sprouts. Educational topics shared with participants were using safe methods of preserving, the importance of pH and acid, as well as different pressure canner and water bath systems. The day was educational and fun for all.



**MSU Extension Food Safety**

**Hotline: 877-643-9882**

**Monday-Friday 9am—5pm.**



Participants walked through a garden and learned about growing produce safely. They then were able to forage through the garden and choose fresh produce to take home to use.

Smoking and dehydrating was recently experienced and learned as the oldest form of food preservation.



# Food Safety



Food Safety is at the Montmorency 4-H Fair. Our booth displays the programs that MSU Extension provides to citizens that reside in our local area and around the state, The Food Safety team also provides on line programming each week.

The regularly scheduled programs are:

Preserving MI Harvest

Food Safety Q & A

Cottage Food Law

Safe Food + Healthy Kids

Pantry Food Safety– It's your Job!

Providing youth with knowledge of Food Safety at the Montmorency 4-H Fair.

Washing hands and using clean equipment is a big part of keeping food safe.



**MICHIGAN STATE**  
UNIVERSITY

**Extension**



# Community Nutrition



Two Montmorency County in-home child care providers participated in a program called, "Growing Healthy Eaters". The goal was to have children consume more locally grown, fresh fruits and vegetables. These child care providers grew some of their own fruits and vegetables and also received a wide variety of fruits and vegetables from local farmers that the children were able to try!



This year elementary students at Hillman and Atlanta received nutrition education that focused on the five food groups of MyPlate and being physically active. Fourth graders also learned about the digestive system seen above on the apron model! 8th grade students in Atlanta also participated in a program called, "Teen Cuisine", where they learned basic knife skills, food safety, and how to follow a recipe. We made healthy, tasty treats such as fruit dip, and smoothies!





# Supporting Food and Agriculture

MSU Extension works to improve farm personnel well-being and income, expand agriculture-related businesses and increase employment opportunities, making agriculture one of the strongest industries within Michigan. Supporting agriculture and helping to improve financial stability and competitiveness has a significant economic impact on Michigan and local communities.

**\$104.7 BILLION**

annual contribution from Michigan's food and agriculture industry

**\$5.13 BILLION**

economic impact of the animal agriculture industry in Michigan

**805,000**

jobs related to the food and animal agriculture industry in Michigan

Partnering with Growers for Timely Research to Address Local Issues

Farm Management  
Over \$1.57 million in tax savings

Smart Gardening  
32,711 article views in 2022

Field Crop Programs  
508,000 indirect  
11,565 direct

Beginner Farmer  
772 participants  
6,071 accessed resources

## Helping Farm Families Transition Farm Businesses

- 168 Attended Educational Programs
- Over 100 Private Sessions
- 35,272 Accessed Written Articles

*"I want you to know that I sincerely appreciate the help you have given us in the farm transition. Thank you for the hope you have given me (personally). I haven't had any for the farm in a long time."*

Succession Planning participant

## Industry Collaborations Focus on Preparedness for

### ERAIL: Emergency Response to Accidents Involving Livestock

- Training of first responders, animal haulers and others on how to properly respond when animals are involved in a traffic accident
- The ERAIL program currently has three trailers fully stocked and deployed in Branch, Jackson and Otsego counties
- 42 counties, 7 other states sent trainees to ERAIL program

## MSU Extension Fruit Team Continues Fight Against Spotted Wing Drosophila (SWD)

Daily contact with fruit industry, 20 presentations to 500+ growers representing majority of 60,000 acres of susceptible crops has reduced SWD economic impact

- 83% based management decisions on local/regional SWD trap reports and MSU Extension articles
- 69% pruned cherry orchards to open canopies to minimize SWD pressure
- 65% monitored for SWD adults using traps on-farm



# Montmorency County

This past year Montmorency County

**MSU Extension has helped community members through phone, email, Facebook and office walk-ins.**

As MSU Extension continues to bring research and education to citizens across the state, three wonderful resources help reach every community member in our counties:

- **Ask Extension** offers one-to-one answers from MSU Extension experts and Extension Master Gardener volunteers on topics such as lawns, gardening, agriculture, food safety, food preservation, natural resources, community development, youth programming and more! Visit Ask Extension at: <https://www.canr.msu.edu/outreach/ask-an-expert>
- **The MSU Extension Lawn and Garden Hotline** is made up of Extension Master Gardeners with the knowledge and resources to help community members with questions from “What plant is this?” to “What’s eating my flowers?” Call the hotline at: (888) 678-3464
- **Soil Test** to learn what vital nutrient your soil is missing for healthy growth in gardens, lawns, and crops. Learn more at: <https://homesoiltest.msu.edu/>



**MISSION:**

**Michigan State University Extension helps people improve their lives through an educational process that applies knowledge to critical needs and issues and opportunities.**

MSU is an affirmative-action, equal-opportunity employer, committed to achieving excellence through a diverse workforce and inclusive culture that encourages all people to reach their full potential. Michigan State University Extension programs and materials are open to all without regard to race, color, national origin, gender, gender identity, religion, age, height, weight, disability, political beliefs, sexual orientation, marital status, family status or veteran status.

## Resources at your Fingertips

### CONTACT US:

MSU Extension Montmorency

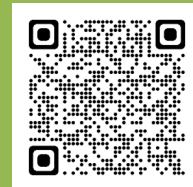
PHONE: 989-785-8013

EMAIL:

[msue.montmorency@county.msu.edu](mailto:msue.montmorency@county.msu.edu)

WEB: [www.canr.msu.edu/otsego](http://www.canr.msu.edu/otsego)

Join us on Facebook:



Adam Koivisto [koivist4@msu.edu](mailto:koivist4@msu.edu)

Patricia Makins [makinspa@msu.edu](mailto:makinspa@msu.edu)

Karen Fifield [fifield@msu.edu](mailto:fifield@msu.edu)

Bonnie Hardies [colli427@msu.edu](mailto:colli427@msu.edu)

Danielle Jirasek [jirasekd@msu.edu](mailto:jirasekd@msu.edu)

**MICHIGAN STATE  
UNIVERSITY**

**Extension**